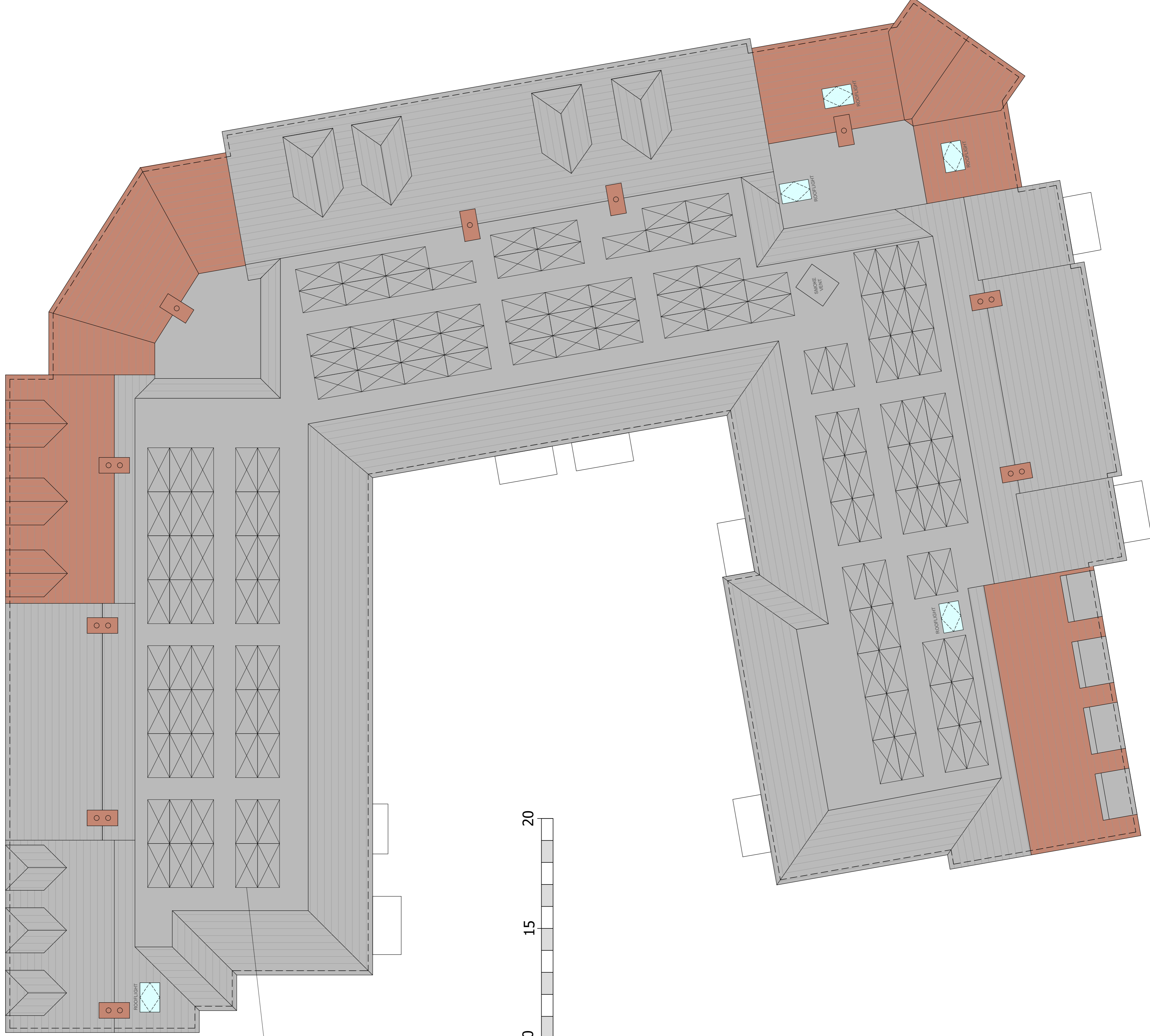


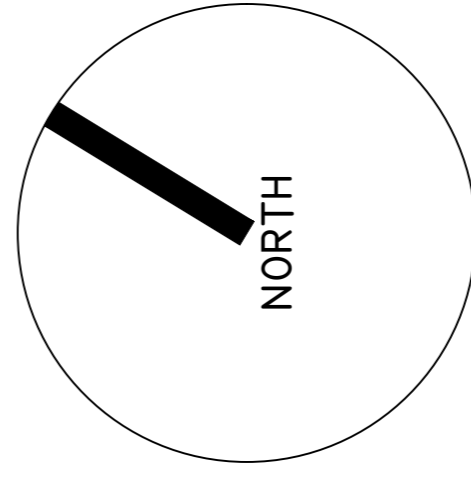
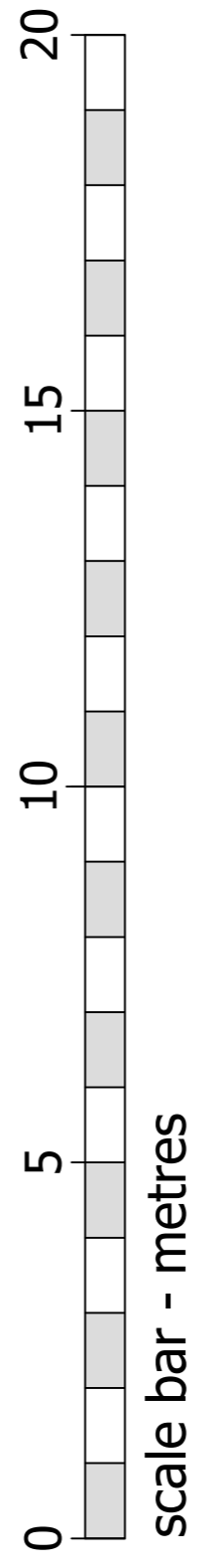
REVISIONS

Rev.	Date	By
A	Aug '23	KLS
Minor amendments. Flat dormers now pitched dormers. Roof over front porch amended. Roof over flat 40 amended. Variations in chimney positions.		
B	Nov '23	KLS
Roof over Guest suite amended. Roof over front porch amended. Chimney positions amended. Chimney numbers. Dormers over flat 35 & 36 reduced in size.		



crowned roof;
area for possible
location of pv panels

Roof Plan



FLAT MIX:			
1 BED APARTMENTS = 31			
2 BED APARTMENTS = 16			
TOTAL			= 47
	Light Blue	Light Green	*
	- 1 BED APARTMENTS	- 2 BED APARTMENTS	- COMMUNAL AREAS
			* - INTERNAL KITCHEN

©CHURCHILL RETIREMENT LIVING

planning issues
TOWN PLANNING AND ARCHITECTURAL DESIGN

Rob JACKSON RIBA

Churchill House - Parade
Riverside
Romsey, Hampshire SO51 8JG
Telephone: (0)1423 462109
Fax: (0)1423 462101
Email: info@planningissues.co.uk

Client

Churchill
Retirement Living

Project Title

Retirement Living Apartments
Edwina Mountbatten House - Broadwater Road
ROMSEY
SO51 8GH

Drawing Title

PROPOSED ROOF PLAN
PLANNING APPLICATION

Scale: 1:100 @ A1

Date: JUNE 2023

Drawn: KLS

Checked: RJ

Drawing No. 10123RS - PA05

Rev: B